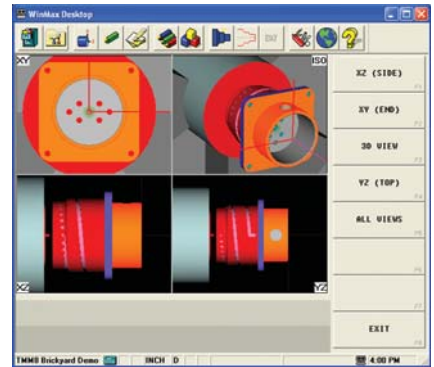
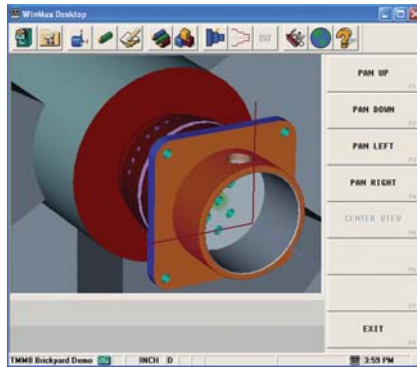
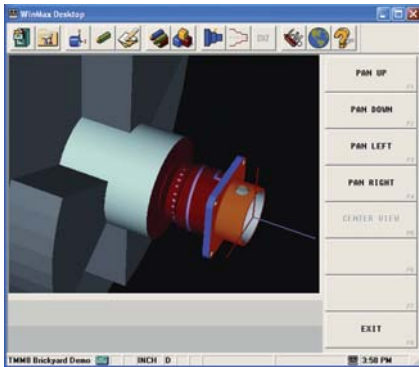




TM
SERIES

TMM
SERIES

Hurco Lathes – Now with driven tooling



TMM8



TMM10



TM6



TM8



TM10

CALL 01494 442222

VISIT www.hurco.co.uk

TM STANDARD FEATURES

Industry Standard NC with macro capability
 Swarf Conveyor
 Rigid Tap
 Text Input of job notes
 40GB Hard Drive
 2GB RAM
 2.8GHz Processor
 USB Port
 RS 232 Port
 Constant Surface Speed
 Rendered, or wire frame graphics
 Oversize, pre-tensioned ballscrews
 Automatic central lubrication system
 Latest Digital AC servo motor and drive technology
 Heavy duty linear rails on both axes
 Heavy duty cartridge spindle design
 Solid one piece fine-grain cast iron bed
 Shortest path tool turret indexing or direction selectable
 Kitagawa compatible spindle nose
 Maximum enclosure door opening

Full enclosure splash guards
 Seamless way covers
 Oversized side access doors on both sides of enclosure
 Work end signal light
 Halogen work light
 Levelling pads
 Power cabinet heat exchanger
 Renishaw tool pre-setter
 Parts Catcher assembly
 Hydraulic chuck with soft jaws

Options:

Programmable tailstock quill
 Ultinet network connection
 DXF software
 Range of Bar Feed options
 Bar Pullers
 Tooling packs
 Swarf trays to reduce machine footprint
 Hard jaws

Features the Hurco Max Lathe Control

The same simple, easy to programme software principles that made the mill control so popular are applied to CNC turning.

Programmable in conversational or NC mode, the New "Max" lathe control incorporates advanced graphics that allow you to clearly see the entire process.



Includes "snap-shot" feature to hold a 3D model of each component against the drawing number. Perfect for one-off's and small volumes,

the operator friendly control means that you are not totally reliant on a single trained operator to do your CNC turning.

	TM6	TM6 VDI	TM8	TM8 VDI	TM10	TM10 VDI	TMM8	TMM10
X, Z Axis Travel (mm)	178x356	178x356	203x508	203x508	229x559	229x559	203x508	229x559
Swing Over Cross Slide (mm)	230	230	320	320	356	365	320	400
Distance Between Centres (mm)	403	403	586	586	513	513	586	497
Max Cutting Diameter (mm)	254	254	304	196	356	254	227	270
Max Cutting Length (mm)	325	325	477	477	490	490	508	490
Max Spindle Speed (rpm)	6,000	6,000	4,800	4,800	3,000	3,000	4,800	3,000
Max Fed Bar	42	42	51	51	77	77	51	77
Peak Spindle Power (HP/KW)	15 (11)	15 (11)	19 (14)	19 (24)	25 (19)	25 (19)	24 (18)	24 (18)
Max Spindle Motor Torque (Nm)	98	98	155	155	311	311	190	474
Rapid Traverse X, Z Axis (m/min)	19,24	19,24	19,24	19,24	19,24	19,24	19,24	19,24
Tool Shank	20x20	VDI 20	25x25	VDI 30	25x25	VDI 40	VDI 30	VDI 40
Number Of Tools Standard	12	12	10	12	12	12	12	12
3 Jaw Chuck (mm)	152	152	203	203	254	254	203	254
Turret Index Time - Adjacent	0.5 Sec	0.5 Sec	0.5 Sec	0.5 Sec	1.0 Sec	1.0 Sec	0.23 sec	0.31 sec
Positioning (mm)	±0.005	±0.005	±0.005	±0.005	±0.005	±0.005	±0.005	±0.0025
Repeatability (mm)	±0.0025	±0.0025	±0.0025	±0.0025	±0.0025	±0.0025	±0.005	±0.0025



Tool Holder Type	DIN 5480	DIN 5480
Tool Turret HP (Peak)	6HP (4.4 KW)	8.85 HP (6.6 KW)
Tool Turret Torque (Peak)	28.5 Nm	42 Nm
Max Speed	5,000 RPM	5,000 RPM
Base Speed	1,500 RPM	1,500 RPM
0 - 5,000 Accel Time	0.12 Sec	0.12 Sec
5,000 - 0 Decell Time	3.8 Sec	3.8 Sec

We make machines smarter.®



TM SERIES LATHES



VM RANGE



VMX RANGE



5 AXIS



HTX



ROEDERS

Hurco Europe Ltd, Halifax Road, Cressex Business Park, High Wycombe, Buckinghamshire HP12 3SN

Tel (01494) 442222 Fax (01494) 443350 sales@hurco.co.uk www.hurco.co.uk